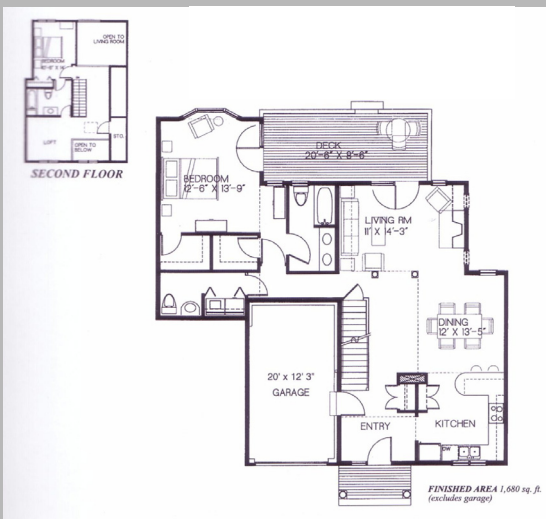
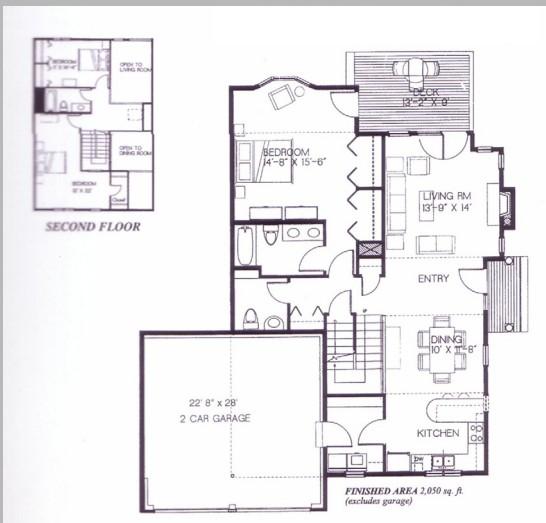




The Deacon House 2,150 sq.ft.



The Lowell House 1,790 sq.ft.



The Everett House 1,875 sq.ft.

Structure

- Approximately 1,790 to 2,150 sq. ft. of living space
- Architectural Roof Shingles-30 yr.
- Full Basement
- Vinyl Siding
- Large Windows: Double-Hung, Energy Efficient
- One & two car garages

Interior

- 9' ceilings on 1st floor
- 8' ceilings on 2nd floor
- Gas-fired Fireplace
- Hardwood floors, ceramic tile
- Wall to wall carpeting

Kitchen

- Custom designed solid wood cabinets
- Granite countertops with stainless steel sink
- GE Profile Self-cleaning Gas Range
- GE Profile Dishwasher
- GE Spacemaker Microwave
- Fiberglass bathtub/shower unit

Electrical & Lighting

- Designer lighting fixtures and ceiling fan(s) included
- Cat. 5 wiring & cable in bedrooms & living room
- Washer and Electric Dryer Hook-up

Utilities

- 1-Zone Gas Forced Hot Air
- 1-Zone Air-conditioning
- 100 AMP Underground Electric Service
- Town Water & Sewer